

Name: _____



PRACTICE



TUTORIAL

Practice & Problem Solving



Scan for
Multimedia



Leveled Practice In 14 and 15, divide.

$$\begin{array}{r}
 \square \square \text{ R } \square \square \\
 14. \ 62 \overline{) 5, 841} \\
 \underline{- \square \square \square} \\
 \square \square \square \\
 \underline{- \square 4 \square} \\
 1 \ 3
 \end{array}$$

$$\begin{array}{r}
 8 \square \square \\
 15. \ 4 \overline{) 350.} \\
 \underline{- \square \square} \\
 3 \square \\
 \underline{- \square \square} \\
 2 \square \\
 \underline{- \square \square} \\
 \square
 \end{array}$$

In 16–19, divide. Record remainders.

16. $2,593 \div 21$

17. $19 \overline{) 6,927}$

18. $9 \overline{) 2,483}$

19. $968 \div 38$

In 20–23, divide. Write remainders as decimals.

20. $5 \overline{) 56}$

21. $232 \div 40$

22. $44 \div 10$

23. $4 \overline{) 2,626}$

In 24–27, divide.

24. $6 \overline{) \$54.18}$

25. $187.2 \div 8$

26. $7 \overline{) 6.3}$

27. $137.5 \div 5$

In 28–31, divide. Annex zeros if needed to write remainders as decimals.

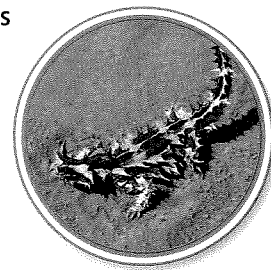
28. $6.4 \div 0.8$

29. $0.6 \overline{) 0.2430}$

30. $52.056 \div 7.23$

31. $0.745 \overline{) 9.089}$

32. Ants are one of the Thorny Devil lizard's favorite foods. It can eat 45 ants per minute. How long would it take this lizard to eat 1,080 ants? Express your answer in minutes.



33. **Critique Reasoning** Henrieta divided 0.80 by 20 as shown. Is her work correct? If not, explain why and give a correct response.

$$\begin{array}{r} 0.40 \\ 20 \overline{)0.80} \\ \underline{-80} \\ 0 \end{array}$$

34. Which brand of fruit snacks costs less per pound? How much less?

Fruit Snacks	
Brand A 15 lb	Brand B 25 lb
\$16.20	\$22.25

35. **Be Precise** How many times as much does each item cost in 2010 as in 1960?



Item	1960 Cost	2010 Cost
Movie Ticket	\$0.75	\$9.75
Regular Popcorn	\$0.25	\$4.10
Regular Drink	\$0.35	\$3.08

Movie Ticket _____

Regular Popcorn _____

Regular Drink _____

36. **Higher Order Thinking** Kendra has 5.5 pounds of popcorn and wants to package it equally in 50 bags. How can she use place-value reasoning to find the amount of popcorn to put in each bag?

37. You and a friend are paid \$38.25 for doing yard work. You worked 2.5 hours and your friend worked 2 hours. You split the money according to the amount of time each of you worked. How much is your share of the money? Explain.

Assessment Practice

38. Draw lines to connect each division expression in Column A with its quotient in Column B.

Column A	Column B
21.6 ÷ 3	7.2
315.7 ÷ 41	7.5
90 ÷ 12	7.7

39. Draw lines to connect each division expression in Column A with its quotient in Column B.

Column A	Column B
634.5 ÷ 4.5	31
1,364 ÷ 44	141
1,248 ÷ 0.25	4,992

